

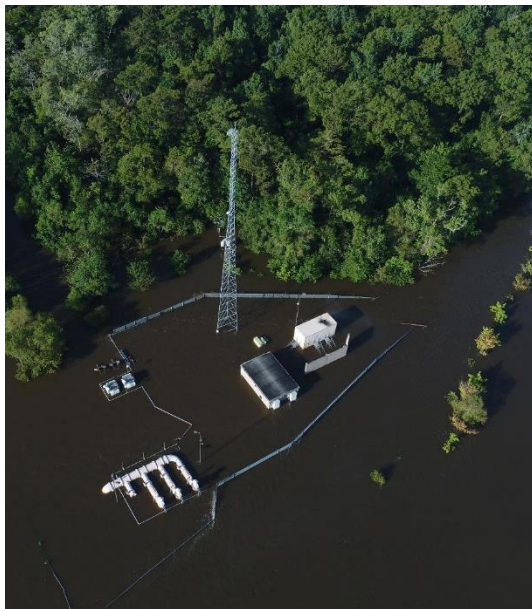
CITY OF BEAUMONT DISASTER RESPONSE AFTER TROPICAL STROM HARVEY

Dr. Joseph Majdalani, P.E., CFM
 801 Main Street,
 Beaumont, Texas 77704

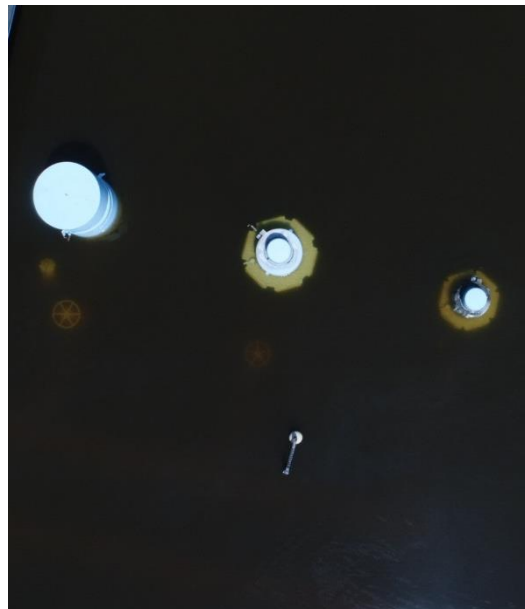
Abstract

Due to the rising waters of the Neches River caused by Tropical Storm Harvey, the City of Beaumont lost service from the main raw water pump station that supplies the City’s Surface Water Treatment Plant. The raw water pump station is located along the banks of the Neches River and draws water from the river as its main source to supply the City’s drinking water system. The City also lost service from the secondary water source at the Loeb Ground Water Plant in Hardin County as well as 29 of the City’s 76 sewer lift stations.

This presentation will outline the many challenges faced by the City of Beaumont following Tropical Storm Harvey.



Raw Water Pump Station



Loeb Ground Water Plant